

# Building Solutions to Climate Change



Aaron Adelstein, **Built Green™** Director

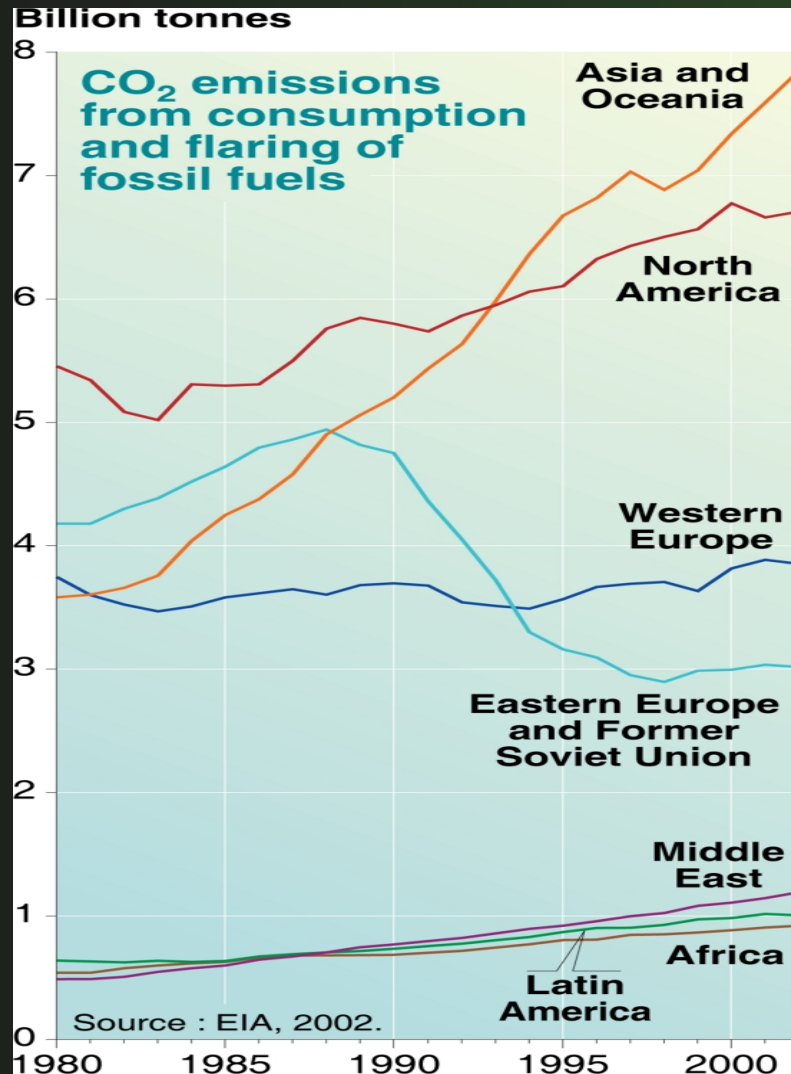
[builtgreen@mbaks.com](mailto:builtgreen@mbaks.com)



**BUILT GREEN™**



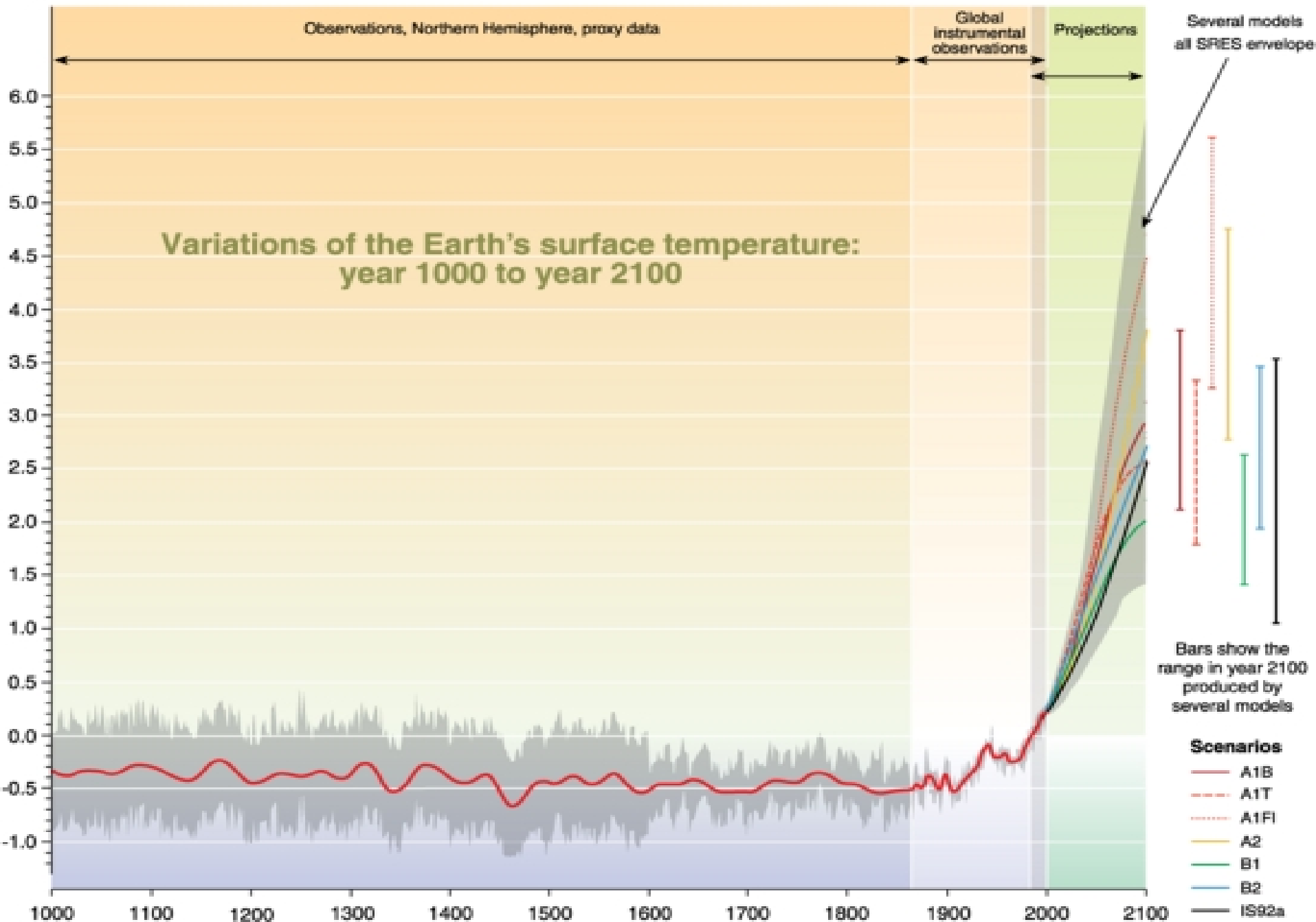
**MASTER BUILDERS  
ASSOCIATION**  
*of King and Snohomish Counties*



## CO<sub>2</sub> emissions the major cause of Global Warming

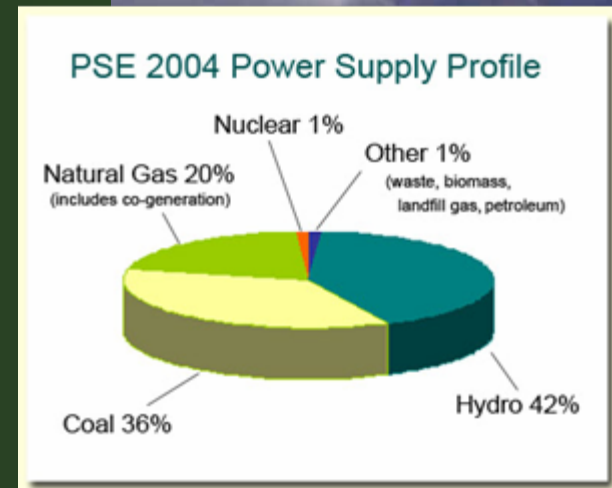
Burning of fossil fuels for:

- Electrical Energy Generation
- Vehicle Emissions



# Coal Burning Still Prolific and Growing

- US Energy Consumption
  - Buildings- 48%
  - Transportation- 27%
  - Industrial- 25%
- China: 1 new coal plant every week
- Shanghai: 1 new Manhattan every year



**BUILT GREEN™**



**MASTER BUILDERS  
ASSOCIATION**  
*of King and Snohomish Counties*

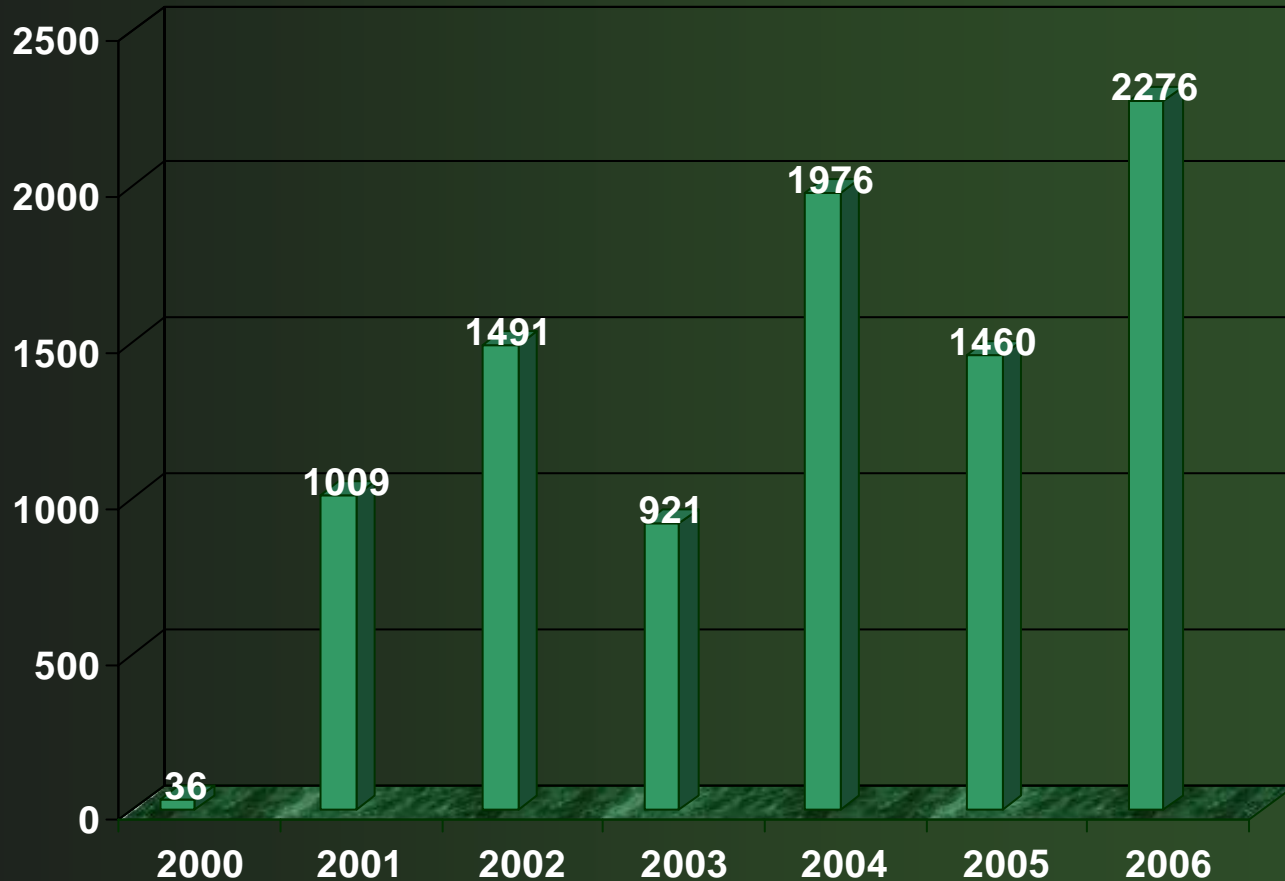
# What is Built Green™?

- Built Green is a residential green building **certification program**. It provides a framework by which to measure the level of 'green' in a home through the use of a Built Green checklist.
- An **educational program** on green building for builders, designers and consumers.
- An **association** of builders, designers, realtors, vendors, utilities, and municipalities. Built Green provides opportunities for networking among industry leaders.
- 501c(3) non-profit

*In partnership with King County, Snohomish County, City of Seattle, and City of Issaquah.*



# Built Green Projects Certified



**9,169**  
Total Projects  
Certified!!!

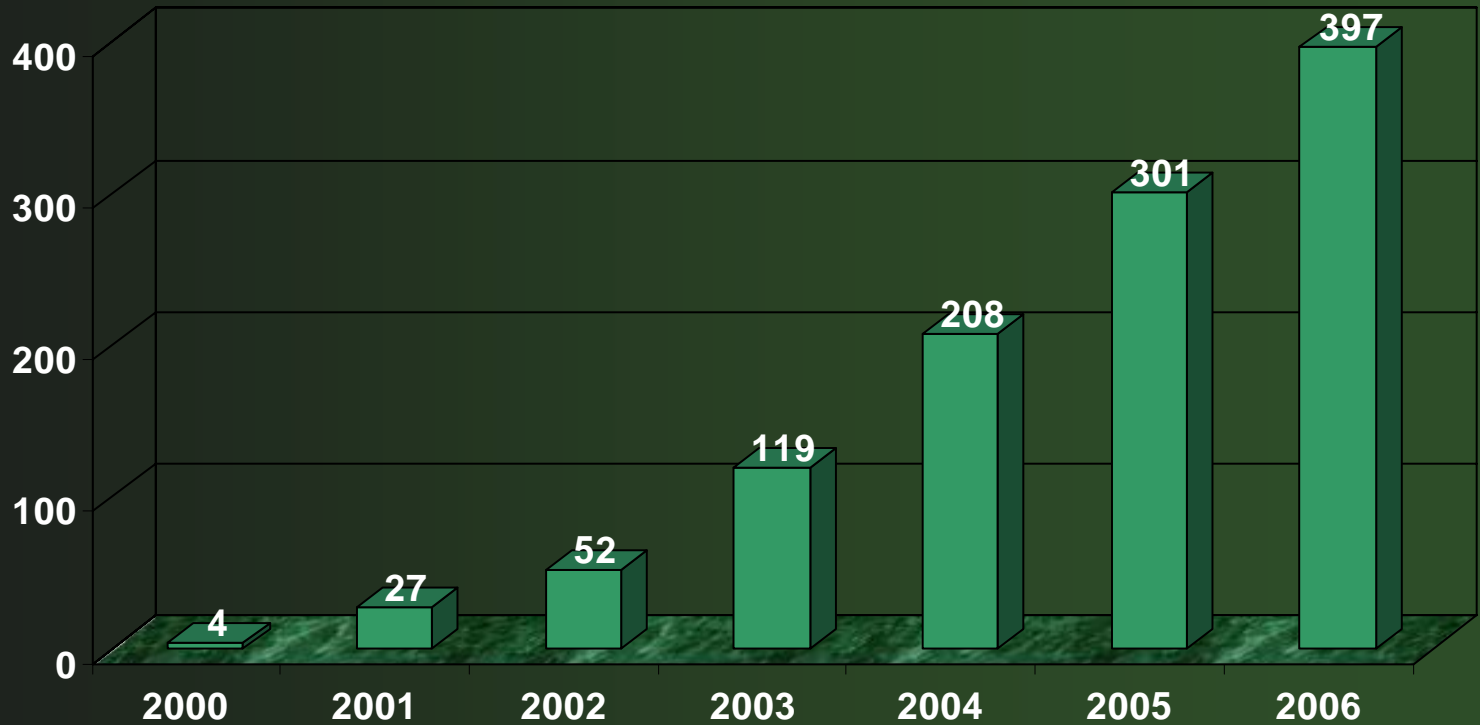


**BUILT GREEN™**



**MASTER BUILDERS  
ASSOCIATION**  
as of 10/25/16  
*of King and Snohomish Counties*

# Built Green Membership Growth



**BUILT GREEN™**



**MASTER BUILDERS  
ASSOCIATION**  
*as of 10/25/16*  
*of King and Snohomish Counties*

# Green Building Incorporates...

- principles
- techniques
- materials



that conserve natural resources and improve Environmental Quality throughout a building's life-cycle.



**BUILT GREEN™**



**MASTER BUILDERS  
ASSOCIATION**  
*of King and Snohomish Counties*

# Energy Efficiency: *Goals*

- Reduce heating/cooling loads
- Improve thermal performance and efficiency
- Utilize renewable energy sources



# But so many buildings have already been built ...right?



1.75 Billion square feet of building space torn down annually

+

5 billion square feet renovated

+

5 billion new square feet built

---

= Over the next 30 years  $\frac{3}{4}$  of building stock will be new or renovated

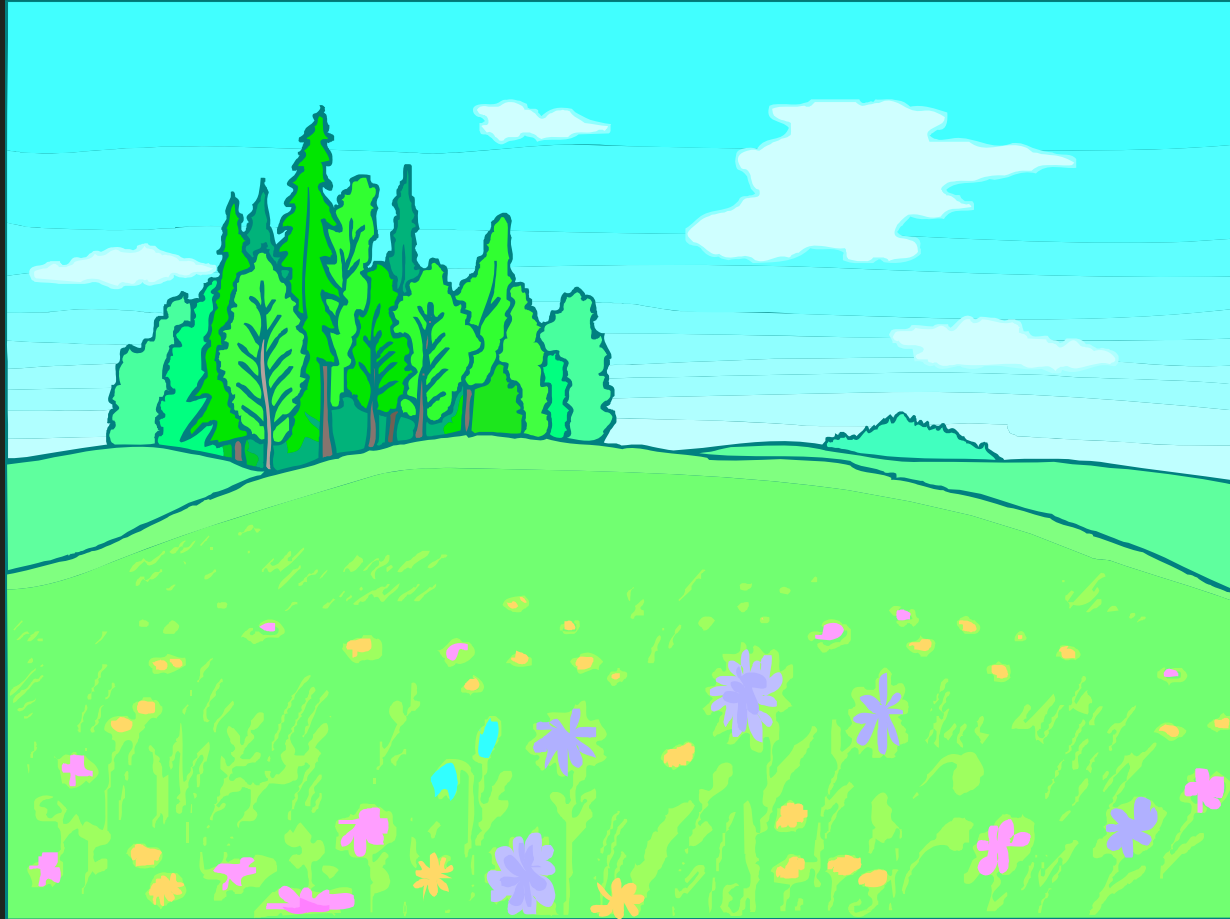


**BUILT GREEN™**



**MASTER BUILDERS  
ASSOCIATION**  
*of King and Snohomish Counties*

# What does a Built Green home or community look like?



**BUILT GREEN™**



**MASTER BUILDERS  
ASSOCIATION**  
*of King and Snohomish Counties*

# What does a Built Green home or community look like?



**BUILT GREEN™**



**MASTER BUILDERS  
ASSOCIATION**  
*of King and Snohomish Counties*

# What does a Built Green home look like?



**BUILT GREEN™**



**MASTER BUILDERS  
ASSOCIATION**  
*of King and Snohomish Counties*

# BedZed- A study in sustainability



- Zero Net Energy
- Carbon Neutral
- 86 units including live-work
- Wastewater treatment and reuse

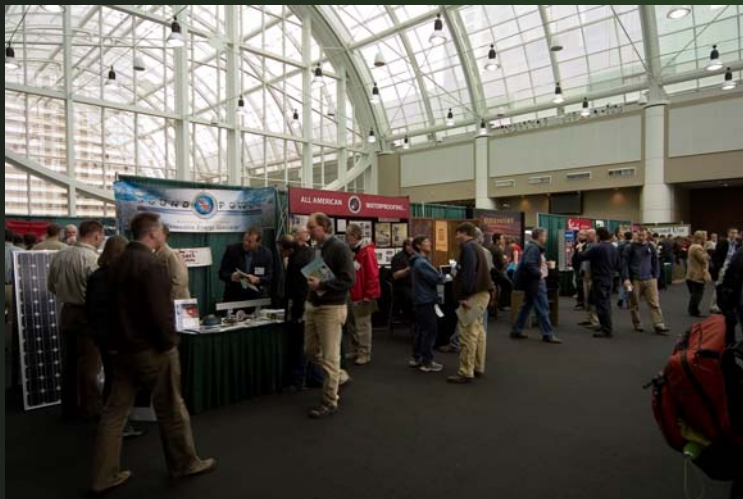


**BUILT GREEN™**



**MASTER BUILDERS  
ASSOCIATION**  
*of King and Snohomish Counties*

# Built Green Conference



Exhibitors of green products

2 Nationally recognized speakers

Green building and green design workshops

Networking opportunities

Built Green Hammer Awards



**2007 Keynote:**  
L. Hunter Lovins

Save the Date!

Tuesday, March 13,  
2007

Everett Events Center



**MASTER BUILDERS  
ASSOCIATION**  
*of King and Snohomish Counties*